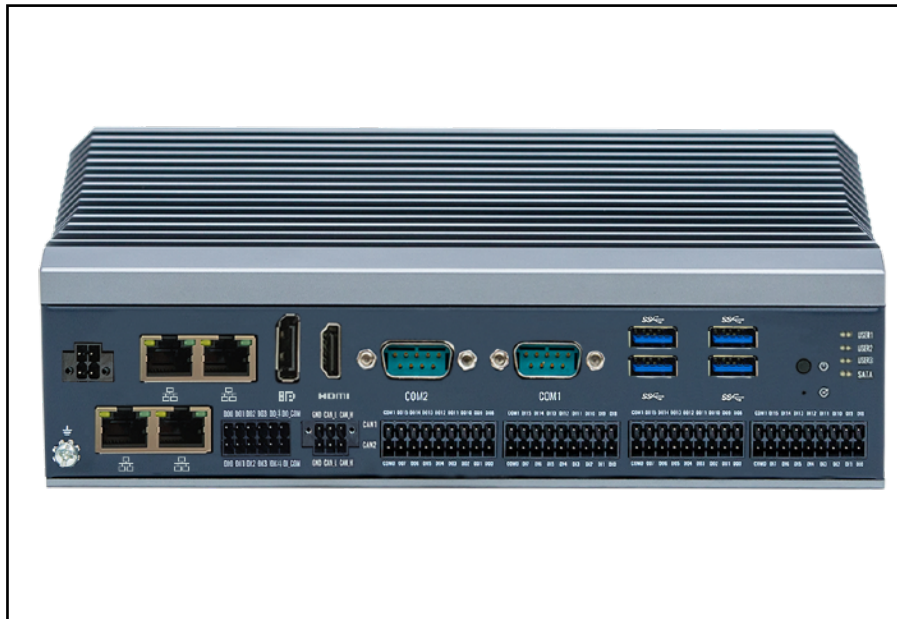


ST E610 Series Industrial PC

Industrial Computer Vision Controller



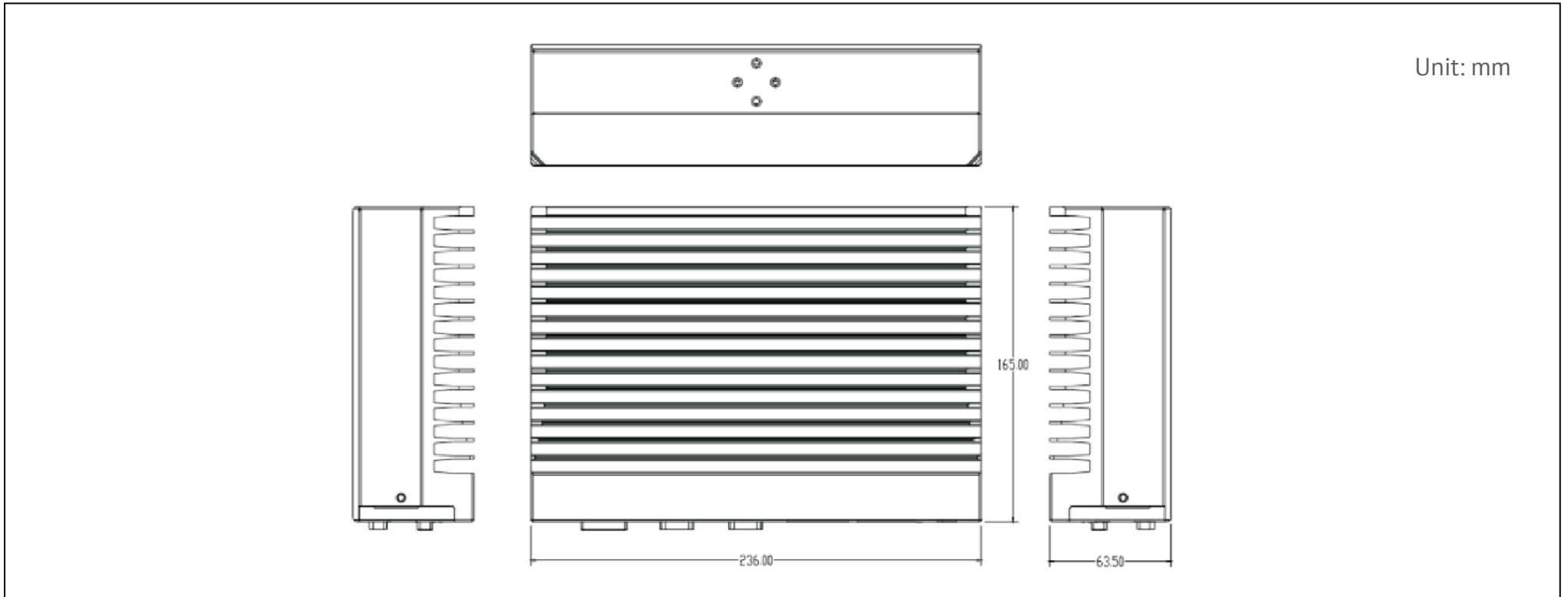
Features

- Support Intel Tiger Lake-U UP3(i7-1165G7/i5-1135G7/i3-1115G4/6305E)
- AMI 128Mbit SPI BIOS
- Max. 64GB DDR4 3200MT/s SO-DIMM RAM
- 1 x DP, 1 x HDMI, support dual independent displays
- 4 x Intel i226-V GbE LAN
- 32*DI, 32*DO
- 1 x RS-232/422/485, 1 x RS-232, 2 x RS-485
- 2 x CANBus
- Compact and fanless design

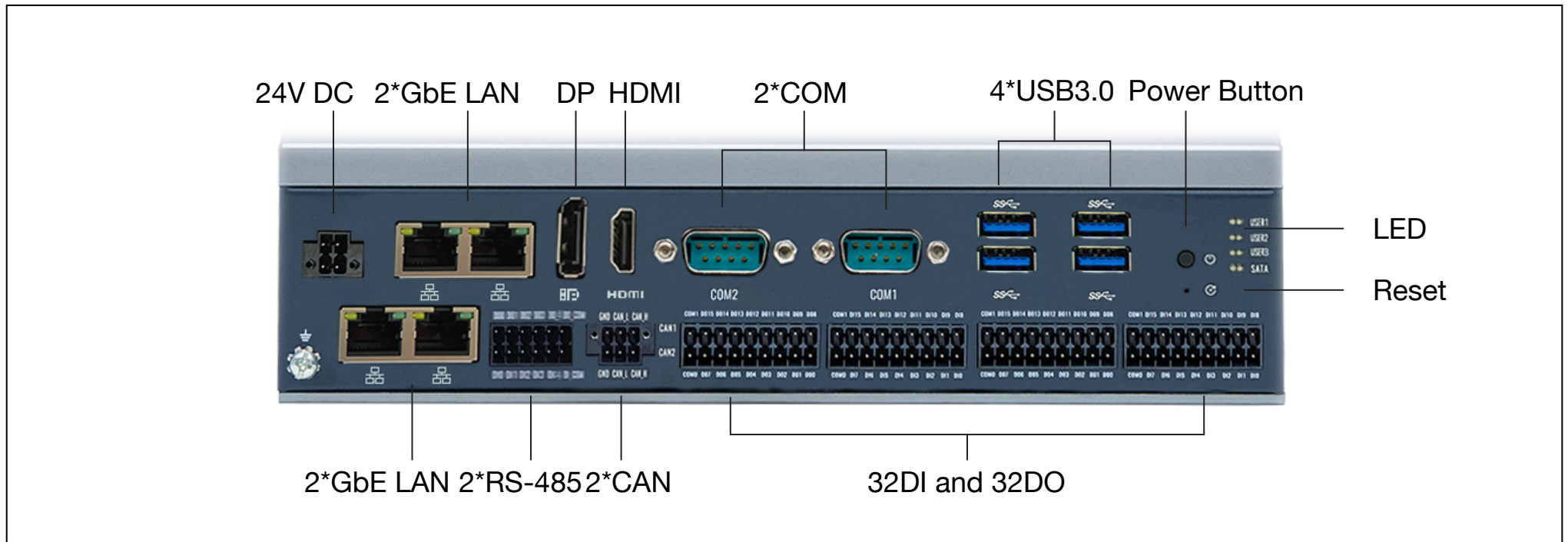
Specifications

Item	Sub-Items	Descriptions
Processor System	CPU	Intel Tiger Lake-U UP3(i7-1165G7/i5-1135G7/i3-1115G4/6305E)
	TDP	28W MAX
	BIOS	AMI 128Mbit SPI Flash
Memory	Technology	Dual channel DDR4 3200
	Max. Capacity	64 GB
	Socket	2 x SO-DIMM
Graphics	Controller	Intel® Iris® Xe graphics, up to 96 graphics execution units(EU)
	Graphic Features	5K60 10b 4:4:4 HEVC/VP9/SCC, 8K60 12b 4:2:0 HEVC/VP9/SCC, 8K30 10b 4:2:0 AV1, 4K60 8b 4:2:0 AVC
Display	DP	1 x DP 1.4a up to 4096 x 2304 x 36 bpp @60 Hz or 5120 x 3200 x 24 bpp @60Hz
	HDMI	1 x HDMI 2.0b up to 4096 x 2304 x 24 bpp @60 Hz
External I/O	USB 3.0	4
	LED	4(SATA, USER3, USER2, USER1)
	Serial Ports	1 x RS-232/422/485, 1 x RS-232, 2 x RS-485
	Ethernet	4 x Intel i226-V
	CANBus	2 x CANBus 2.0 A/B
	DIO	32DI and 32DO
Storage	SATA 3.0	1
	M.2	1 x M.2 M-Key 2280 support SSD (PCIe x4, NVME)
Expansion	M.2 E-Key	1 x M.2 E-Key 2230 support Wifi
	M.2 B-Key	1 x M.2 B-Key 3052 support 4G/5G
	SIM	1 x Nano SIM
	Mini-PCIe/PCIe	1 x Mini-PCIe
Power requirement	Supply voltage	DC 24V
	Power management	AT/ATX
	Max. consumption	120W
	Test environment	Intel Core i7-1165GRE DDR4 32GB X2
Others	Watchdog	65536 level, 0~65535 sec
	TPM	TPM 2.0
OS	Operation system	Windows 10 64 bit, Linux
Physical Characteristics	Dimension	236 x 165 x 63.5mm (L x W x H)
	Weight	2.2 Kg
Environment	Operational Temperature	0 ~ 60° C ,extend -40~85° C
	Non-Operating	-20°C~60°C
	Storage Temperature	-40° C ~ 85° C(-40~185° F)
	Relative Humidity	operating 95% @ 40 °C (non-condensing)
	Relative Humidity	non-operating 95% @ 60 °C (non-condensing)
	Vibration During Operation	With SSD:3Grms, IEC 60068-2-64, random vibration, 5~500 Hz, 1hr/axis
	Shock During Operation	With SSD:30 G, IEC 60068-2-27, half sine, 11m duration
	LATENCY_MAX or	20us(24 hr RTPM.stress)
	ESD	Contact +/-4 KV,Air +/-8 KV
	EMC	CE/FCC Class B
Regulatory	62368	

Dimensions



Interface



Ordering Information

Suggested Model: i7- 1165G7 - 16 GB Ram - 512 GB SSD - Wifi Card

Model	CPU	Memory	GbE	USB3.0	Serial port	DP	HDMI	DI	DO	CAN	M.2	Mini-PCIE	Power Input
E610-xxxx	i7- 1165G7	16 GB	4	4	4	1	1	32	32	2	3	1	24V DC

• CPU List

	Intel Tiger Lake-U CPUs			
CPU	i7- 1165G7	i5- 1135G7	i3- 1115G4	6305E
Max Turbo Frequency	4.70 GHz	4.20 GHz	4.10 GHz	/
Cores	4	4	2	2
Threads	8	8	4	2
TDP	Max 28W	Max 28W	Max 28W	15W
Cache	12M	8M	6M	4M